

# SOYBEANS

## S14-A6<sup>BRAND</sup>

RM:  
1.4



**SCN**  
SOLUTIONS™

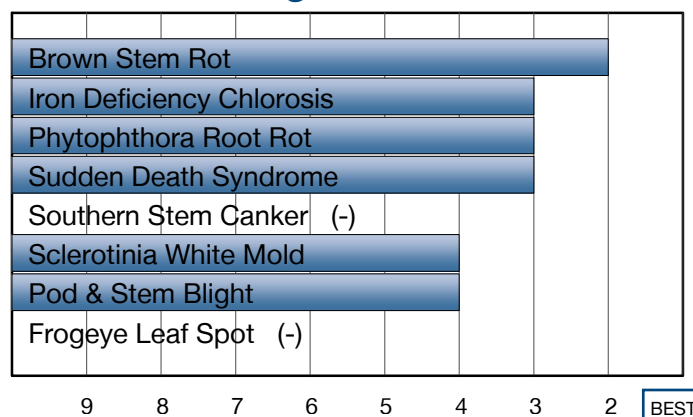
### EXCEPTIONAL YIELDS WITH BROAD SOIL ADAPTABILITY

- Dependable Phytophthora gene and field tolerance
- Superior emergence and very strong standability
- Solid Iron Deficiency Chlorosis tolerance for high pH soils

### Plant Characteristics

Plant Height	<b>Medium-Short</b>
Canopy/Plant Type	<b>Medium</b>
Branching	<b>Moderate</b>
Growth Habit	<b>Indeterminate</b>
Flower Color	<b>Purple</b>
Pubescence Color	<b>Light Tawny</b>
Pod Color	<b>Tan</b>
Hilum Color	<b>Black</b>






### Disease Ratings



### Agronomic Traits

Emergence	<b>1</b>
Standability	<b>2</b>
Shatter Tolerance	<b>3</b>
Green Stem	<b>1</b>
Estimated Seed Size	<b>Medium</b>
% Protein at 13% mst.	<b>36.8</b>
% Oil at 13% mst.	<b>18.9</b>
Narrow Rows	<b>1</b>
Wide Rows	<b>3</b>

### Adaptation to Soil Types

Drought Prone	
High pH*	
Highly Productive	
Moderate/Variable Environments	
Poorly Drained	

### Diseases and Pests

Phytophthora Root Rot (PRR) Source	<b>Rps1k</b>
Soybean Cyst Nematode (SCN) Races	<b>R3, MR14</b>
(SCN) Source	<b>PI88788</b>

For more information or to view product performance data: [www.nk-us.com](http://www.nk-us.com) (800) 258-0521





 **Soybeans**

**syngenta®**

Ratings are based on interpretation of data gathered by Syngenta and/or observations across areas of adaptation and may change as additional data are gathered.

©2018 Syngenta. NK®, SCN Solutions™, the Alliance Frame and Syngenta logo are trademarks of a Syngenta Group Company. Genuity®, Genuity and Design, Genuity Icons, and Roundup Ready 2 Yield® are registered trademarks of Monsanto Technology LLC used under license. NK Soybean varieties are protected under granted or pending U.S. or Canadian variety patents and other intellectual property rights. Seeds containing the Genuity Roundup Ready 2 Yield trait may be protected under numerous United States and Canadian patents. It is unlawful to save NK soybeans or Genuity Roundup Ready 2 Yield soybeans for planting or transfer to others for use as a planting seed, regardless of the trait(s) within the seed. Use of Genuity Roundup Ready 2 Yield varieties is subject to the terms of your license with Monsanto. Follow grain marketing and all other stewardship directions. Details of these requirements can be found in the Syngenta Stewardship Agreement.

1-9 Scale: 1 = Best, 9 = Worst, (-) = Not Available, NA = Not Applicable.

Icon Scale:  Best Choice  Good Choice  Average to Slightly Below Average  Not Recommended

\* Represents an assessment of stand establishment, chlorosis severity and yield performance

Published June 08, 2018. For use until July 01, 2019.